

# SECTIONS 1, 2, & 3, T.6N., R.1W., S.L.B. & M.

IN WEBER COUNTY

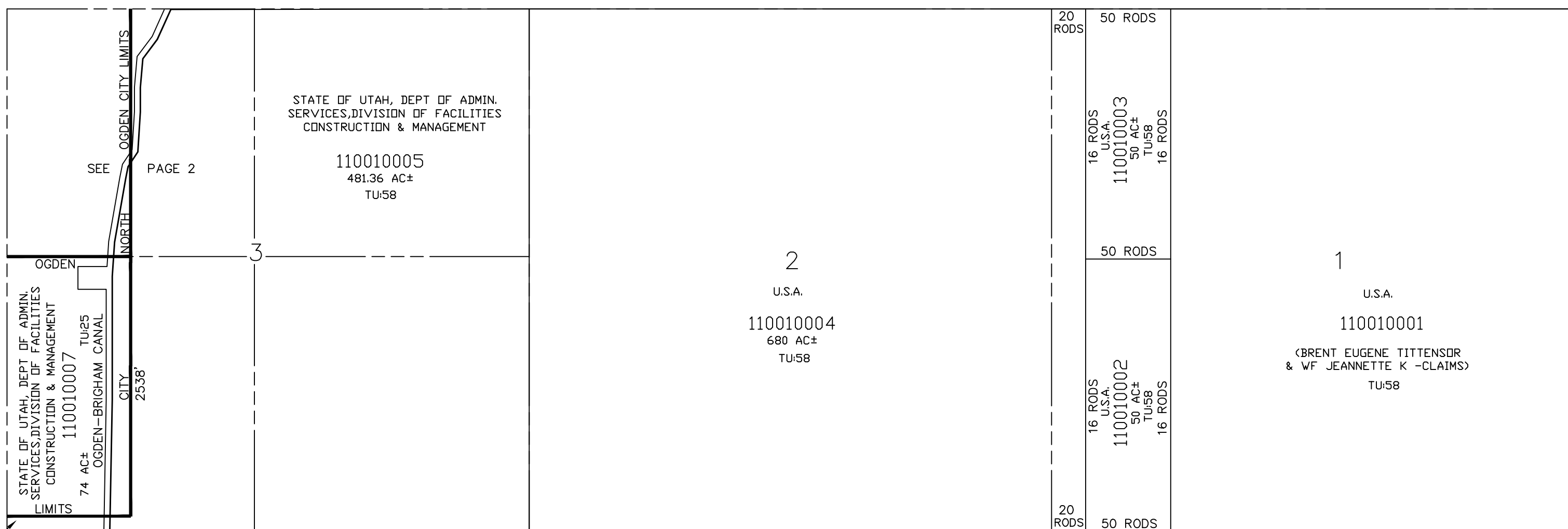
TAXING UNIT: 25, 58

SCALE 1" = 1000'

SEE BOOK 17,  
PAGE 82

SEE BOOK 17,  
PAGE 90

SEE BOOK 17,  
PAGE 90



SEE PAGE 3

SEE PAGE 5

SEE BOOK 20, PAGE 4

(110010006)  
 STATE OF UTAH, DEPT OF ADMIN.  
 SERVICES, DIVISION OF FACILITIES  
 CONSTRUCTION & MANAGEMENT  
 TU:23

SEE PAGE 84

SEE PAGE 86

SEE PAGE 86